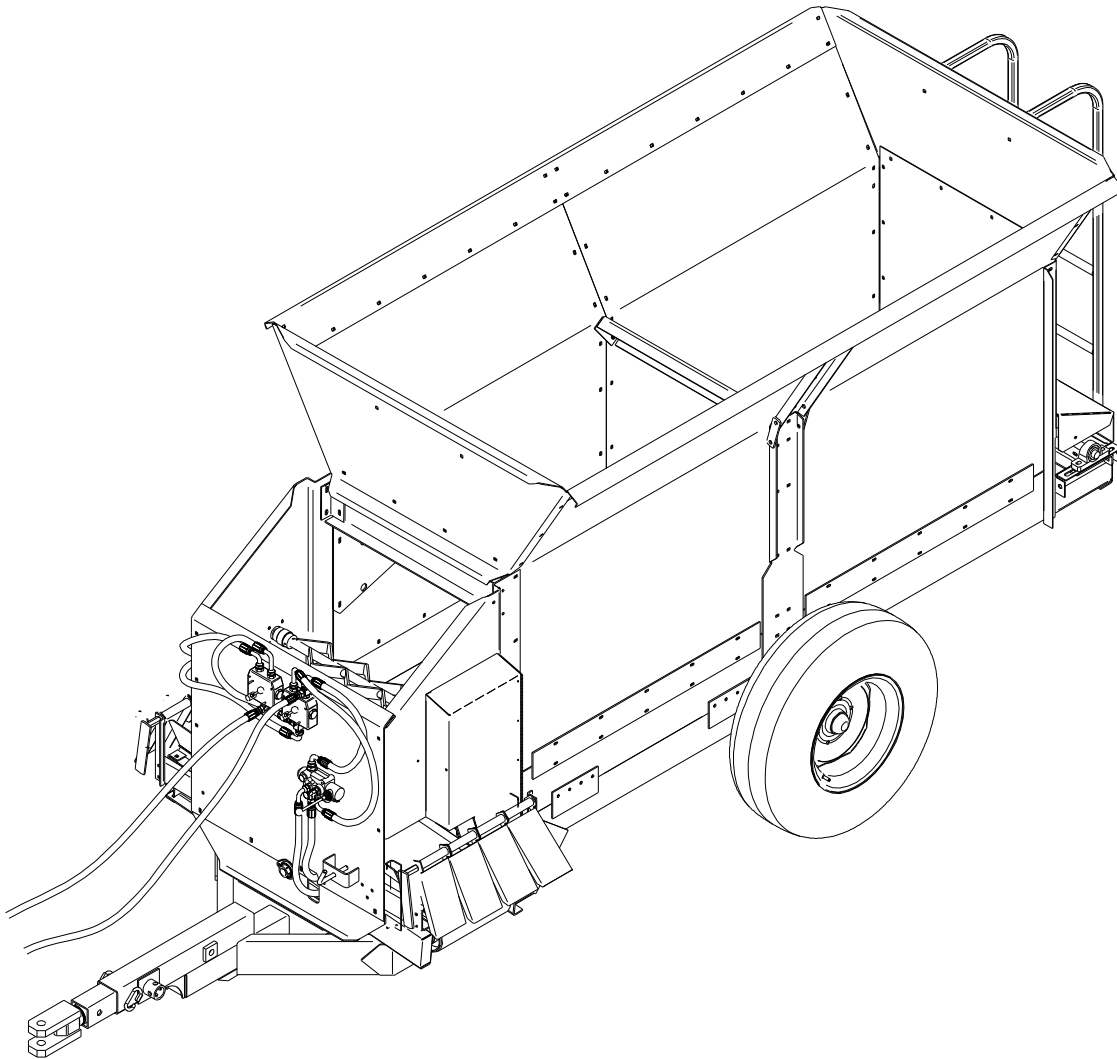


# OPERATOR'S MANUAL

## 304 Row Mulcher



PUBLICATION DATE: 4/1/13

Millcreek Manufacturing Company  
525 Reservoir Road  
Honey Brook PA 19344  
Phone: 800-311-1323

MILLCREEK PART# 43840



**WARNING:** DO NOT assemble, operate, or maintain this equipment without first reading and understanding the information provided in this manual and the ADMA Safety Manual for Agricultural Implement Drivelines. Failure to follow all safety precautions as stated in these manuals may result in serious personal injury or death.

---

## WARRANTY INFORMATION

Millcreek Manufacturing Company (hereinafter called the Company) warrants to the original Purchaser, the Equipment, manufactured by the Company, to be free from defects in material and workmanship under normal use and service. The Company obligation under this Warranty shall be limited to replacement or repair of any parts thereof, free of charge, to the original Purchaser provided, however, that the part(s) to be replaced or repaired, shall, within two years after delivery to the original Purchaser, be demonstrated to be defective; which determination shall be made by the Company. The said components or parts must be returned through the Selling Dealer or Distributor directly to the Company with all transportation charges prepaid. Notice of defect shall be furnished in writing to the Seller and to the agent through whom the machinery was purchased, disclosing in full all known defects and failure in operation and use. Reasonable time shall be given to the Seller to remedy any such defects and failures.

The high density, polyethelene floorboards are warranted for the lifetime of the machine from cracking, rotting, splitting, or peeling.

This Warranty does not cover, under any circumstances, any parts, components, or materials which, in the opinion of the Seller and the Company, have been subjected to neglect, misuse, alteration, accident, or repaired with parts other than those manufactured by and obtained from Millcreek Manufacturing Company.

This Warranty does not cover components which are already covered by a separate warranty provided by the supplier of said parts or components.

**This Warranty is made in lieu of all other warranties, expressed or implied, including any warranty of merchantability and fitness for use and purpose and of all other obligations or liabilities on the Company part and any implied warranty. The Company neither assumes nor authorizes any other person to assume for it, any other liability in connection with the sale of this equipment. This Warranty shall not apply to this equipment or to any part thereof which has been subjected to accident, negligence, alteration, abuse, or misuse.**

The Company makes no warranty whatsoever in respect to accessories or parts not supplied by the Company. The term "original Purchaser," as used in this Warranty, shall be deemed to mean that person for whom the equipment is originally supplied. This Warranty shall apply only within the boundaries of the continental United States.

Under this Warranty, the Company cannot guarantee that conditions existing beyond its control will not affect the Company's ability to obtain materials or manufacture necessary replacement parts.

The Company reserves the right to make design changes, or changes in specifications at any time, without any contingent obligation on the part of the Company to purchasers of machines and parts previously sold.

The Company warrants the construction of the equipment sold herein and will replace at the Company's expense for a period of two years from the date hereof, any parts which prove defective as determined under the terms of this Limited Warranty.

## TRADEMARKS

The Millcreek logo is a trademark of the Millcreek Manufacturing Company. All other brand or product names mentioned are the registered trademarks or trademarks of their respective owners.

## COPYRIGHT

Copyright © 2009 Millcreek Manufacturing Company. All rights reserved. No part of this publication may be reproduced, or distributed without the prior written permission of Millcreek Manufacturing Company, 525 Reservoir Road, Honey Brook, PA 19344. Subject to change without notice.



---

# TABLE OF CONTENTS

<b>SECTION 1: INTRODUCTION.....</b>	<b>1-1</b>
Guide to this Manual.....	1-1
For Your Safety.....	1-1
Safety Labels.....	1-1
Inspection and Warranty Registration .....	1-5
Standard/Optional Components.....	1-5
Warranty Registration.....	1-5
 <b>SECTION 2: ATTACHING THE ROW MULCHER TO THE TRACTOR.....</b>	 <b>2-1</b>
Connecting the Row Mulcher Hitch to the Tractor Drawbar.....	2-1
Attaching the Row Mulcher PTO to the Tractor PTO.....	2-2
Assembling the Safety Tow Chain.....	2-2
 <b>SECTION 3: OPERATION &amp; ADJUSTMENT.....</b>	 <b>3-1</b>
Understanding Row Mulcher Operation.....	3-1
The Row Mulcher Operating Components.....	3-1
Important Specifications for Row Mulcher Operation.....	3-1
Guidelines for Loading the Row Mulcher.....	3-2
Operating the Row Mulcher.....	3-2
 <b>SECTION 4: MAINTENANCE.....</b>	 <b>4-1</b>
Guidelines for Regular Maintenance.....	4-1
General Maintenance.....	4-1
Wheel/Tire Maintenance.....	4-2
Wheel Bearing Maintenance.....	4-2
Drive System Maintenance.....	4-2
Hydraulic System Maintenance.....	4-4
 <b>APPENDIX A: PARTS REFERENCE.....</b>	 <b>A-1</b>
Parts Ordering Information.....	A-1
Main Frame and Chassis.....	A-2
Wheel and Hub Assembly.....	A-4
Drive System Assembly.....	A-6
Apron/Floor Chain Assembly.....	A-8
Box Assembly.....	A-10
Conveyor Assembly.....	A-12
Hydraulics.....	A-14

---

## SECTION 1: INTRODUCTION

### Guide to this Manual

This manual contains all the information necessary to safely operate and maintain your Millcreek Row Mulcher. Consult the Table of Contents for a detailed list of topics covered. You'll find this manual's step-by-step procedures easy to follow and understand. Should questions arise, please contact your Millcreek dealer before starting any of the procedures in this manual.

Regarding the information presented in this manual:

- All safety, operating, and servicing information reflects current production models at the time of publication of this manual.
- References made to left, right, front, and rear are those directions viewed when facing the unit from the rear.

**Please read all sections in the manual carefully--including the important safety information found in this section--before beginning any procedures; doing so is critical for the safe and proper operation of the Millcreek Row Mulcher.**

---

### For Your Safety...

For your safety, Millcreek documentation contains the following types of safety statements (listed here in order of increasing intensity):

- **NOTE:** A clarification of previous information or additional pertinent information.
- **ATTENTION:** A safety statement indicating that potential equipment damage may occur if instructions are not followed.



**CAUTION:** A safety statement that reminds of safety practices or directs attention to unsafe practices which could result in personal injury if proper precautions are not taken.



**WARNING:** A *strong* safety statement indicating that a hazard exists which can result in injury or death if proper precautions are not taken.



**DANGER!** *The utmost levels of safety must be observed;* an extreme hazard exists which would result in high probability of death or irreparable serious personal injury if proper precautions are not taken.

**The best operator is a careful operator.** By using common sense, observing general safety rules, and adhering to the precautions specific to the row mulcher, you, the operator, can promote safe equipment operation.

## For Your Safety... (continued)

In addition to observing the specific precautions listed throughout the manual, **the following general precautions apply and *must be heeded* to ensure proper, safe operation.**



**WARNING:** Keep hands and feet from under the equipment at all times. Ensure that you are safely distanced from any other persons before operating the row mulcher.



**WARNING:** DO NOT attempt to operate the row mulcher in areas with steep inclines, ditches, large rocks, stumps, or holes which may endanger the operator by upsetting the tractor or cause damage to the row mulcher.



**WARNING:** To prevent serious personal injury and to promote safe equipment operation, keep all shields in place during operation. Ensure that all mounting hardware is properly tightened.



**WARNING:** Never clean, adjust, or repair the row mulcher while the equipment/tractor is in motion. Never attempt to pull material from any part of the equipment while it is in motion.



**WARNING:** On PTO units, DO NOT get off the tractor while the tractor PTO is engaged. Make sure the PTO shield safety chains are properly attached.



**WARNING:** Never wear loose clothing when operating the row mulcher as it may become caught in the moving parts of the machine.



**WARNING:** Never allow children or anyone else to ride on the row mulcher.

**ATTENTION:** For proper and safe operation of the spreader, periodically inspect all parts for excessive wear. Replace worn components with factory-authorized parts.

**ATTENTION:** To prevent the hitch from coming disconnected during operation, use the proper size hitch pin with a safety cotter at all times.

**ATTENTION:** Be sure to use a safety chain when traveling with the row mulcher on a public roadway.

## **Safety Labels**

Following are the locations and descriptions of all labels on the row mulcher; refer to Figure 1A. Please note that some labels denote model number, model description, etc. while others contain important safety messages.

Each **Safety Label** contains an important safety message starting with a key word as discussed earlier in this section (e.g. ATTENTION, CAUTION, WARNING, DANGER). For your safety and the safe operation of your equipment, review all labels and heed all safety messages as printed on the labels.

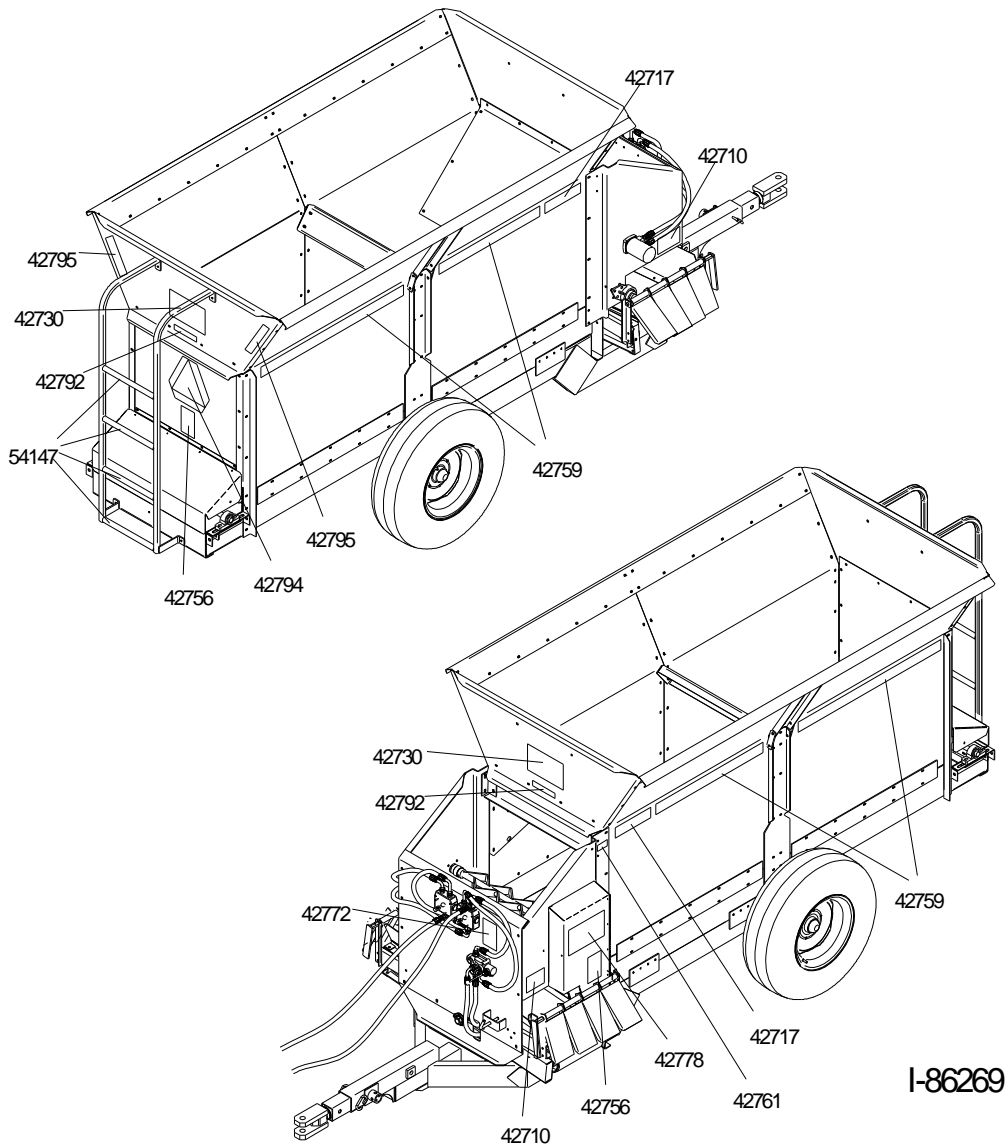
Be sure to keep the safety labels clean and readable. If the labels ever become damaged or illegible, contact your Millcreek dealer for replacements.

## Safety Labels (continued)

### Row Mulcher Safety Labels

<u>Label Part #</u>	<u>Description</u>
42719	DANGER - Rotating PTO Driveline, Keep shields in place
42792	DANGER - NO riders
42710	WARNING - Flying Debris
42756	WARNING - Entanglement, Do NOT operate without shields
42772	WARNING - Spreader combination safety label - moving parts, read manual
42794	SMV (Slow Moving Vehicle) Sign
42717	Millcreek Row Mulcher Label
42730	Millcreek Logo Label
42778	Millcreek Logo Label

**For your safety, be sure to locate all safety labels and review their content before proceeding with operating the row mulcher!**





**Safety Labels (continued)**



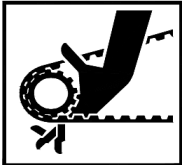
**DANGER NO RIDERS**

42792



**WARNING**

**Entanglement Hazards**



**Moving parts can crush or cut.**

**STAY CLEAR** of machine while engine is running and/or machine is operating. Keep hands, feet, clothing, and hair away from operating parts.



**Never** adjust, lubricate, or clean machine while engine is running and/or machine is operating.

**Never** operate machine without safety shields in place.



**Read and understand** operator's manual and safety labels before operating or servicing the machine.

**Failure to follow these warnings may result in serious injury or death.**

42772



**DANGER**



**KEEP AWAY!**

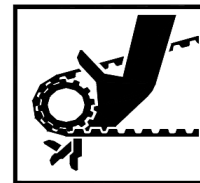
ROTATING DRIVELINE CONTACT CAN CAUSE DEATH. DO NOT OPERATE WITHOUT ALL DRIVELINE, TRACTOR AND EQUIPMENT SHIELDS IN PLACE.

DRIVELINE SHIELDS MUST TURN FREELY ON DRIVELINE. DRIVELINE SHIELDS MUST BE SECURELY ATTACHED AT BOTH ENDS.

42719



**WARNING**



**Entanglement Hazard.**

**DO NOT OPERATE** without safety shield in place. Moving parts can crush and cut.

42756



**WARNING**



**Entanglement / Flying Debris Hazards.**

**DO NOT STAND** in back of machine while engine is running and/or machine is operating. Rotating beaters and/or flying debris can cause serious personal injury or death.



Approach the rear of the machine **ONLY** when all power sources are shut OFF and all moving parts have stopped.

42710

## Inspection and Warranty Registration

The Row Mulcher is shipped from your Millcreek Dealer completely assembled and ready for operation. Inspect your new row mulcher thoroughly upon receipt to ensure that it has been shipped to you in a satisfactory manner. Immediately notify the freight company and your Millcreek dealer in case of shipping damage, shortage(s), and/or errors.

### Standard/Optional Components

**The Row Mulcher is supplied completely assembled with the following components (standard):**

- Cross Conveyor Crescent Belt
- Variable Speed Apron Chain and Cross Conveyor
- Either PTO or Tractor Hydraulic Drive
- Agricultural Ribbed Tires
- Load Retainer

### Warranty Registration

Following inspection of your new spreader, locate the Millcreek Warranty Card in the literature packet shipped with your spreader. For proper warranty registration, Millcreek requires that you fill out the warranty registration card and return it *within 30 days* to:

MILLCREEK WARRANTY REGISTRATION  
Millcreek Manufacturing Company  
525 Reservoir Rd  
Honey Brook PA 19344  
U.S.A.



## SECTION 2: ATTACHING THE ROW MULCHER TO THE TRACTOR

### Connecting the Row Mulcher Hitch to the Tractor Drawbar



**WARNING:** For safe operation, connect the row mulcher directly to the tractor drawbar; DO NOT connect the row mulcher to a three-point hitch.

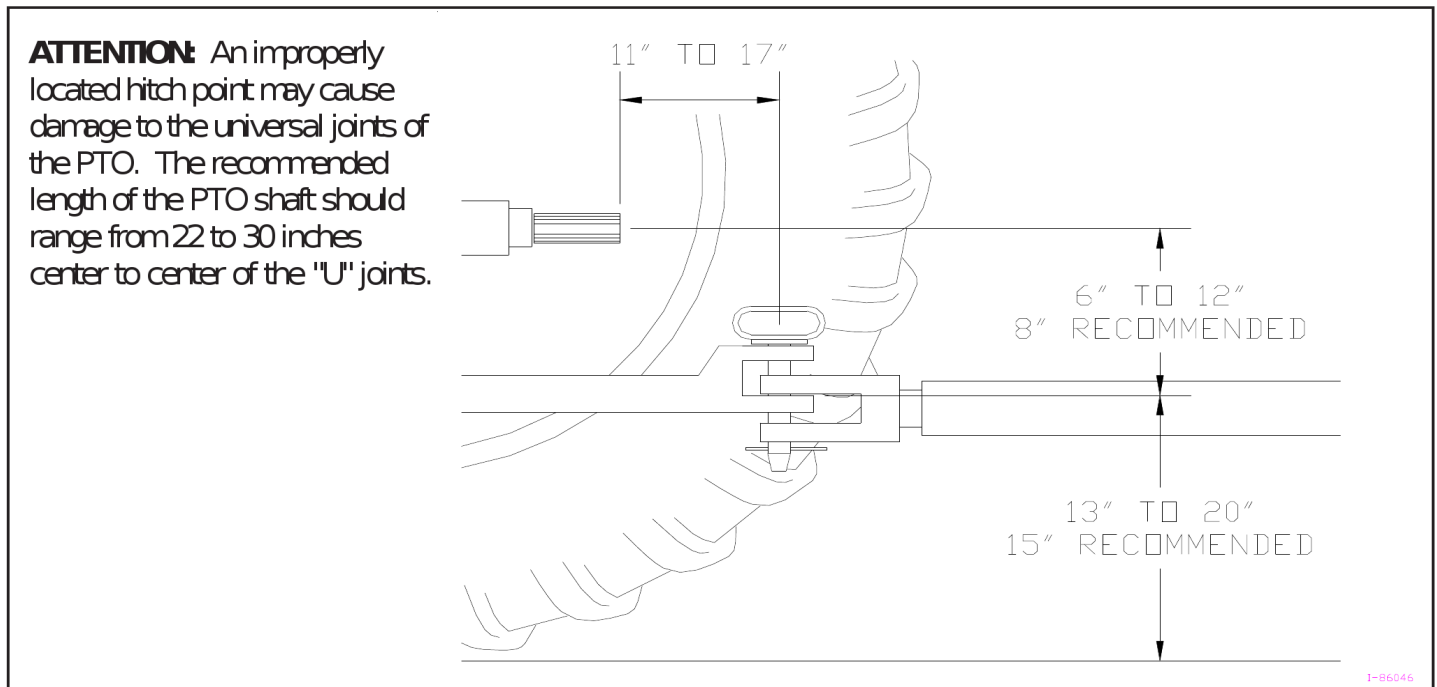
The row mulcher hitch is designed to work with a standardized tractor drawbar. To connect the row mulcher hitch to the tractor drawbar, refer to Figure 2A and adhere to the following guidelines:

- Extend or shorten the tractor drawbar to obtain the horizontal distance from the end of the tractor power take-off (PTO) shaft to the center of the hitch pin hole (as shown in Figure 2A).
- Locate the jack, which is stored along the side of the row mulcher box. Use the jack to adjust the height of the row mulcher hitch so it matches the height of the tractor drawbar.
- Back the tractor into the hitch until the holes line up.
- Fasten the row mulcher hitch to the drawbar with a hitch pin that fits securely (i.e. so that it will not come out during operation).
- Remove the weight from the jack by lowering the row mulcher hitch on the drawbar.
- Return the jack to its storage bracket on the side of the row mulcher box.

**ATTENTION:** DO NOT store the jack by swinging it alongside the hitch; doing so allows the handle to hang down and drag on the ground, which may hinder safe and proper operation.



**WARNING:** Damage to the row mulcher or other vehicle, as well as injury to the operator, may occur if a properly-sized (1" diameter) hitch pin is not installed as recommended. Secure the hitch pin with the clip as shown.



**Figure 2A - Specifications for Connecting the Row Mulcher to the Tractor Drawbar**

## Attaching the Row Mulcher PTO to the Tractor PTO

1. Align the PTO splines on the row mulcher with the PTO splines on the tractor.
2. Pull back the slide collar on the PTO yoke, and slide the row mulcher PTO assembly onto the tractor PTO shaft. Be sure the slide collar snaps forward to indicate that the PTO shaft is properly secured.  
**ATTENTION:** DO NOT transport the row mulcher without having the PTO shaft secured.
3. Refer to Figure 2B. Fasten the PTO safety chain to the link on the row mulcher to prevent rotation of the safety shield during operation.



**WARNING:** *Failure to secure the PTO safety chain will allow the safety shield to rotate.* Operating the row mulcher without the safety shield in proper position may result in serious personal injury or death.

## Assembling the Safety Tow Chain

**NOTE:** *The safety tow chain may be ordered as an optional component for the row mulcher and must be used if the row mulcher is to be moved any time on a public roadway.* Be sure to adhere to all local/state transportation codes for travel on public roadways with this type of equipment.

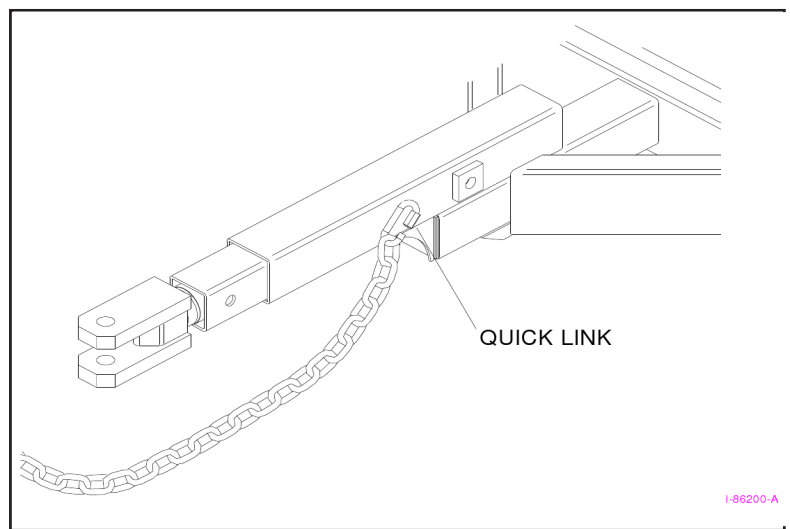


**WARNING:** DO NOT tow the row mulcher (loaded for operation) at highway speeds; doing so may cause the tires to overheat and/or loss of control.

1. Refer to Figure 2B for an illustration of the hook-up of the safety chains (one on each side).
2. Unscrew the quick link nuts (one on each side).
3. Insert the chain link into the quick link as shown (one on each side) and retighten the quick link nuts to keep the chains from slipping out.
4. Hook the other ends of the chains to the appropriate anchor holes on the vehicle hitch.



**WARNING:** For the safety chains to be effective, the installation of the chains should not allow more slack than is necessary for movement during row mulcher operation. Inspect the safety chains regularly to check the condition of the links and locking/hooking mechanisms; replace the chains as soon as weakness/breakage is noted.



**Figure 2B - Attaching the Safety Chains**

## SECTION 3: OPERATION & ADJUSTMENT

### Understanding Row Mulcher Operation

Proper and safe operation of the Millcreek row mulcher requires: (1) being familiar with the row mulcher's operating components and (2) heeding all safety precautions as stated in this manual.

#### The Row Mulcher Operating Controls

The row mulcher hydraulic models draw power from the tractor hydraulic remotes. For optimal operating Performance, run the tractor at the throttle setting for hydraulic flow of 8 GPM and regulate ground speed to no more than 5 mph.

Key components for row mulcher operation and adjustment are:

- The **flow control levers**, located at the front (tractor end) of the row mulcher, allows you to adjust the mulch feed rate and spread pattern.

#### Important Specifications for Row Mulcher Operation



**CAUTION:** Be aware that this row mulcher model has a specific capacity which must not be exceeded to ensure safe and proper operation and to prevent equipment damage.

- **Ensure that the tractor weight is at least equal to the weight of the loaded row mulcher.** For optimal operation, Millcreek recommends that the tractor have at least 25 hp and 8 GPM hydraulic flow

#### Guidelines for Loading the Row Mulcher

- For safe and proper operation, DO NOT exceed the maximum payload of 3000 lbs for this row mulcher.
- **ATTENTION:** NEVER store material in the row mulcher between unloading times during critical cold weather months when a frozen load could result in severe equipment damage (i.e. torn floor apron chain).
- DO NOT store wet material in the row mulcher (or keep the row mulcher outdoors with material in it)--doing so will accelerate rusting of the steel. Be aware that storing material in the row mulcher also makes the material difficult to unload (i.e. it may solidify/harden).

## **Hydraulics**

**Tractor Hydraulic models** draw their power directly from the tractor hydraulic system. **For optimal operating performance, the hydraulic oil flow of 8 gallons per minute (GPM) must be maintained.** At 4 GPM, the spreader will still operate but at a slower speed.

**PTO Hydraulic models** include a hydraulic pump which draws power from the PTO drive line to run the hydraulic motors. The PTO hydraulic pump is designed to provide 8 GPM with a PTO speed of 540 RPM.

## **Row Mulcher Operating Components**

Row Mulcher operation is controlled, in combination, by four variables. The first three variables determine the **application rate**. The fourth variable affects the **spreading pattern**.

- (1) tractor ground speed (mph)
- (2) apron belt speed (0 to 27 feet per minute)
- (3) conveyor speed (0 to 1100 feet per minute)
- (4) deflector positioning

The **Dual Hydraulic Control Valves**, located on the front of the Row Mulcher, provide separate control of floor chain and cross conveyor speeds for maximum control and flexibility.

- The **Left Control Valve** controls the speed of the floor apron chain.
- The **Right Control Valve** controls the speed of the cross conveyor.

## SECTION 4: MAINTENANCE & ADJUSTMENT

### Guidelines for Regular Maintenance



**WARNING:** All shields must be replaced after maintenance or adjustment procedures are performed. Failure to do so could result in serious personal injury or death.



**WARNING:** Perform maintenance procedures and/or adjustments to the row mulcher ONLY when the PTO is disengaged and the tractor engine is not running. Failure to adhere to this caution could result in serious personal injury.

### General Maintenance

Performing regular maintenance on you Millcreek Row Mulcher will help ensure optimal performance. Please follow these guidelines for maintaining your mulcher:

- Clean the row mulcher after each use.
- **ATTENTION:** NEVER store material in the row mulcher between unloading times during critical cold weather months when a frozen load could result in severe equipment damage (i.e. torn floor apron chain). Storing wet material in the row mulcher (or keeping the mulcher outdoors with material in it) will accelerate rusting of the steel.
- Check the row mulcher each time it is used for loose, bent, broken or missing parts.  
**ATTENTION:** During operation, listen for abnormal sounds which might indicate loose parts or other equipment damage. Correct any parts problems immediately
- (For PTO models only) Inspect the PTO safety shield and chain regularly to check the condition of the links; replace the shield and chain as soon as weakness/breakage is noted.
- Once a year, grease the row mulcher's wheel hubs. For PTO drive models, also grease the PTO slide and U-joints.


## Guidelines for Regular Maintenance (continued)

### Wheel/Tire Maintenance

- Once a month, check the wheel lug bolt torque. The recommended torque is 100 ft. lbs.
- Check the tires and maintain proper tire pressure:
  - 40 PSI for Ag Rib Tires

**ATTENTION:** When storing the row mulcher for a period of time, block up the unit to remove weight from the tires. Doing so helps to prevent any possible damage to the tires.

### Wheel Bearing Maintenance

- Adjust the wheel hub bearings after 100 loads and once each season thereafter.
    - Use a jack to raise the row mulcher to remove weight from the wheel.
-  **CAUTION:** Be sure to block up the row mulcher to prevent personal injury while working on the wheels.
- Rotate the wheel and torque the wheel hub bearings to 25 ft. lbs.
  - Back off the nut one flat, plus enough to install the cotter pin (1/6 turn min., 1/3 turn max.)

### Drive System Maintenance

- Apply chain lube to the floor apron chain each time after completing a spreading job **and** before storing the row mulcher for any period of time.
- Periodically check the apron chain and/or cross conveyor belt for proper tension/tightness (refer to Figures 4A and 4B).

#### Procedure for adjusting the apron chain:

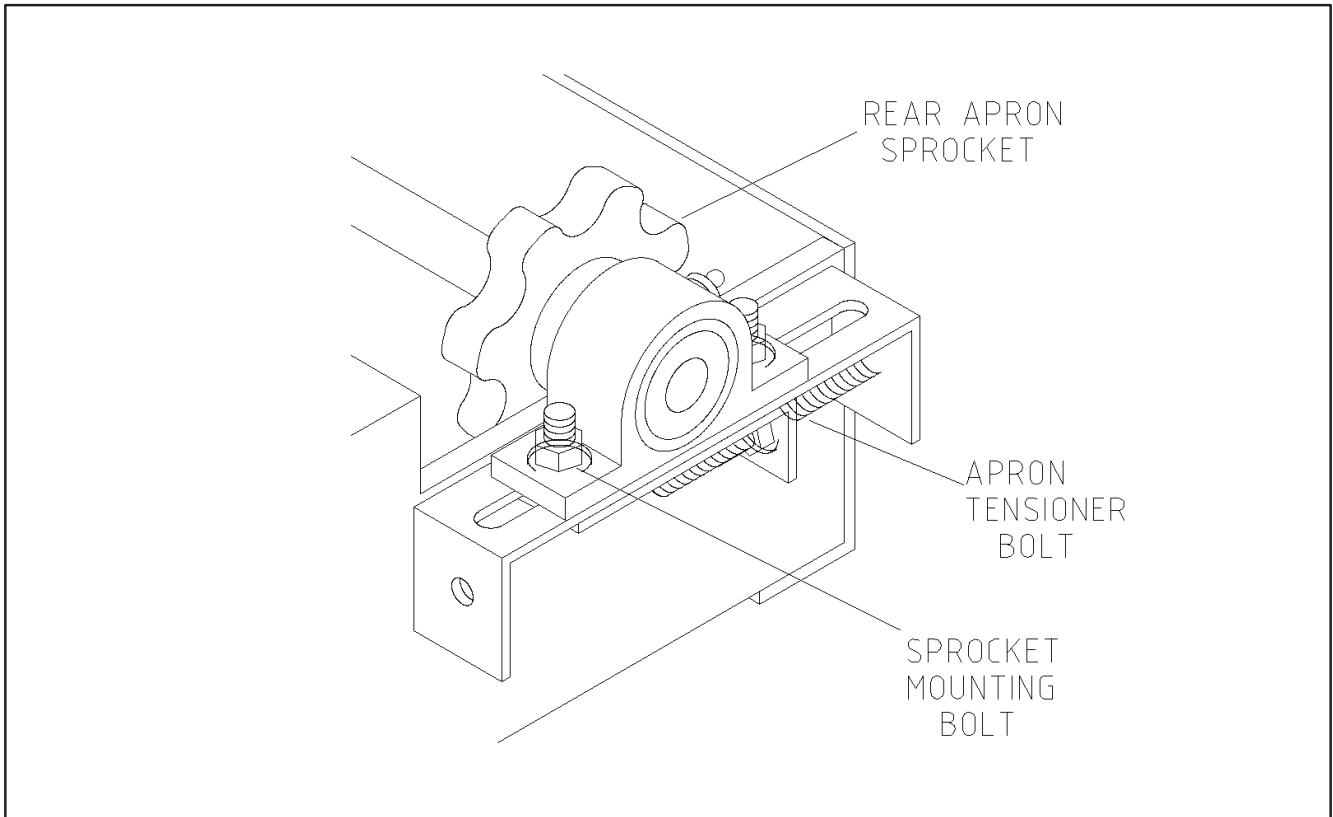
- a) The apron chain can be adjusted using the apron tensioner bolts at the rear of the row mulcher as shown in Figure 4A.
- b) Adjust the apron tensioner bolts so 1/4 to 1/2 of the lower chain strand is laying on the chain guides (steel channels in the apron floor).

#### Procedure for adjusting the cross conveyor belt:

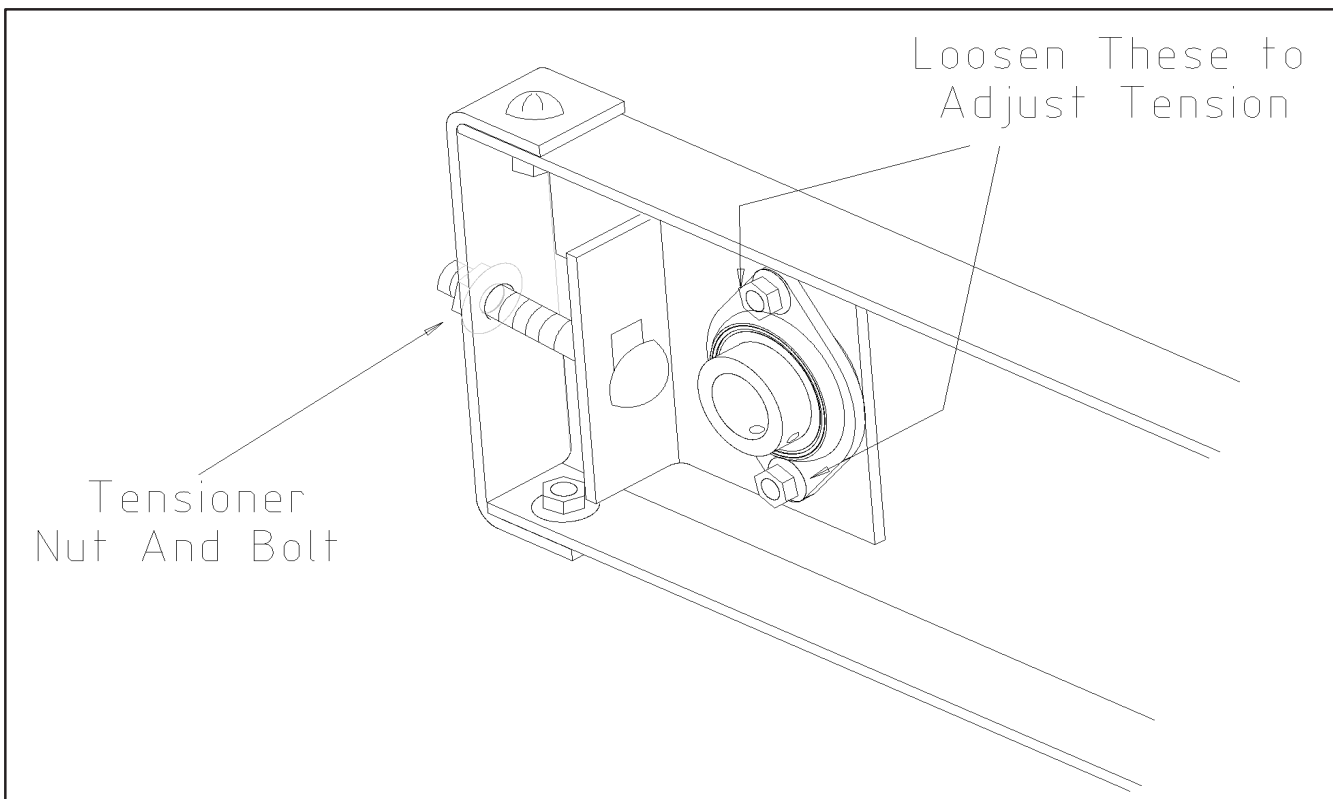
- a) Use a 9/16 " wrench to loosen the mounting bolts on the cross conveyor tensioner bearings (located at the front right corner of the row mulcher on either side of the cross conveyor belt).
- b) Refer to Figure 4B. Adjust the tensioner bolt to obtain the desired tension.

**ATTENTION:** Be sure to tighten the draw bolts **equally on each side** so the belt does not droop or have any slack in it; the belt may be damaged if it is operated when misaligned.

## Guidelines for Regular Maintenance (continued)



**Figure 4A - Adjusting the Apron Chain Tension**



**Figure 4B - Cross Conveyor Belt Tension Adjustment**



## **Hydraulic System Maintenance**

- Periodically check the condition of the hydraulic hoses for flexibility and any signs of rubbing/weakness on the outer surface. Replace the hose(s) as soon as any weakness or cracking is noted.
- **Proper oil maintenance for Tractor Hydraulic Units:** The Tractor Hydraulic unit is shipped with Universal Tractor Hydraulic Fluid (UTF) in the lines. To protect your tractor, make sure the UTF supplied with the Row Mulcher is compatible with the oil in your tractor.
- **Proper oil maintenance for PTO Hydraulic Units:** The PTO Hydraulic Row Mulcher is supplied with either **Castrol Blue Hydraulic Oil (blue in color)** or **Shell Pellus Plus 46 (amber in color)** in the reservoir. (The oils have identical specifications as shown below.)

### **Hydraulic Oil Specifications**

ISO Grade	46
Former Grade	(10)
Viscosity @ 40° C cSt	45.3
Viscosity @ 100° C cSt	6.6
Viscosity @ 100° F, SUS	215
Viscosity @ 210° F, SUS	48
Viscosity Index	103
Flash Point, °C (°F)	215 (420)
Pour Point, °C (°F)	-26 (-15)

- Replace the oil filter after the first 10 hours of operation. After that initial period, replace the filter every 100 hours (in dusty conditions) or every year.

**ATTENTION:** If a PTO Hydraulic Row Mulcher is converted to a Tractor Hydraulic unit, be sure to check if the hydraulic oil is compatible with the oil in the tractor. If it is not, the hydraulic system must be flushed out with new oil to ensure proper functioning and to prevent equipment damage.

## APPENDIX A: PARTS REFERENCE

The following information is provided for your reference in understanding how the row mulcher is assembled and how spare parts can be identified and ordered properly

### Parts Ordering Information

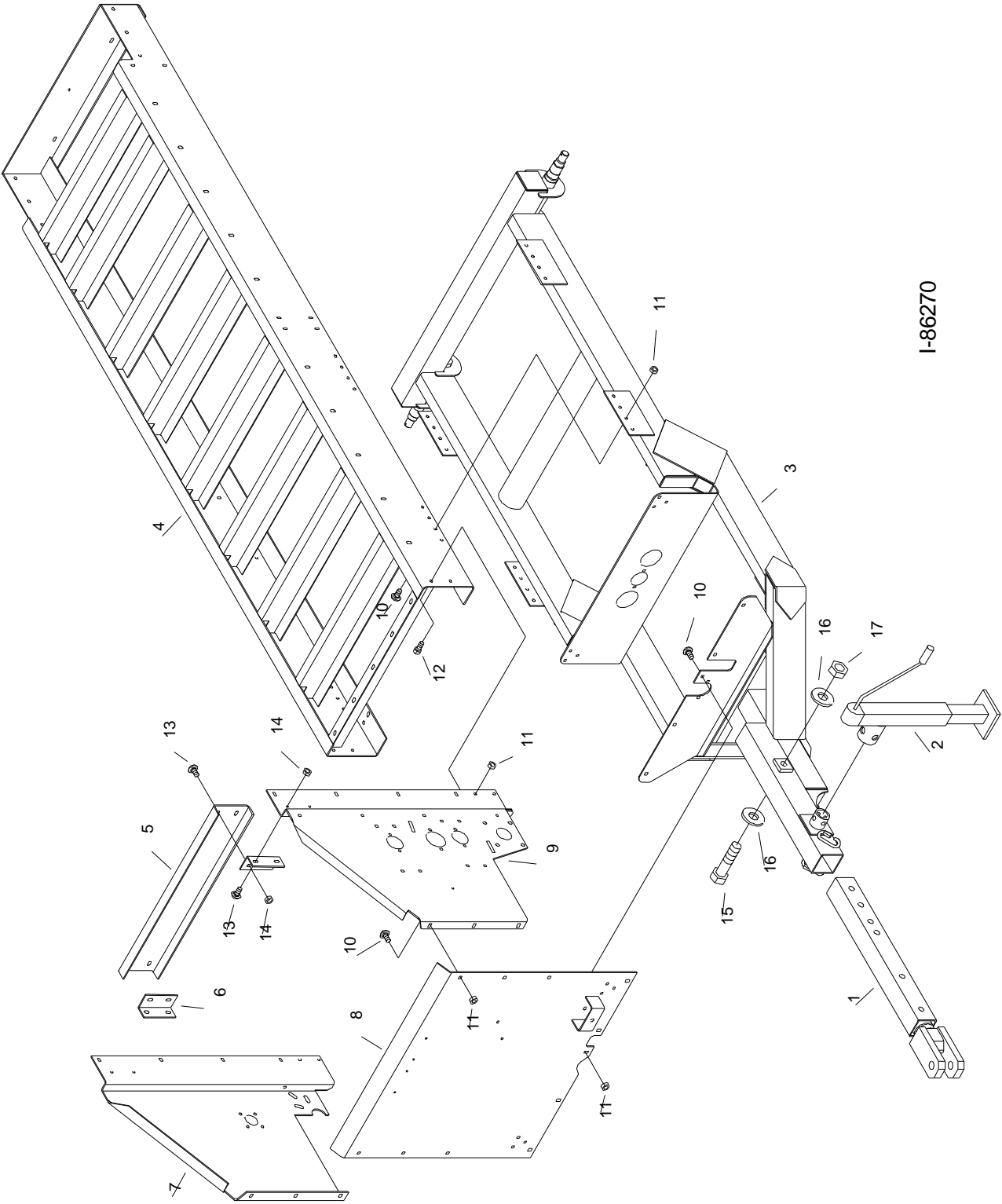
When ordering replacement parts, please provide the following information to your local Millcreek dealer:

- \* Model and serial number of the unit (located on the front left corner of the mulcher)
- \* Part number and description as it appears on the following drawings/parts lists

### General Specifications

Model 304	
Capacity, struck	3.3
Capacity, heaped	4.4
Maximum Payload	3000 lbs
Overall Width	55"
Overall Length	15'
Loading Height	6'
Body Width	30"
Lbs Weight	2100
Minimum GPM	8
Minimum Hp	25
Apron Chain	#662 Pintle

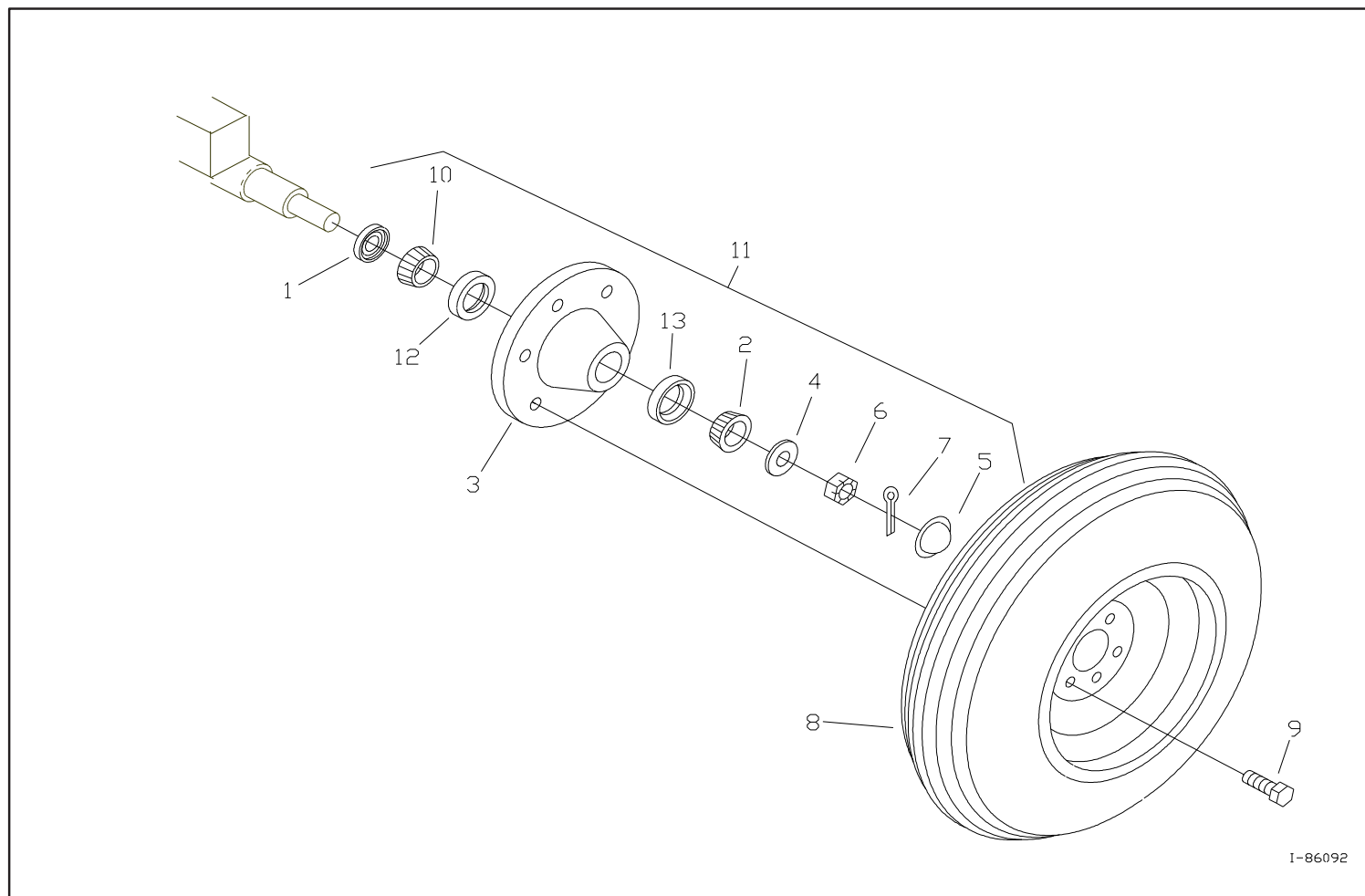
Main Frame and Chassis



I-86270

<u>Item #</u>	<u>Part #</u>	<u>Qty</u>	<u>Description</u>
1	260788	1	Swivel Hitch
2	215187	1	Jack
3	271108	1	Chassis
4	271104	1	Box Frame
5	271103	1	Center Support
6	270231	2	Center Support Bracket
7	271123	1	Right Side
8	271138	1	Front
9	271124	1	Left Side
10	34191	27	3/8 x 3/4 Carriage Bolt
11	34392	31	3/8 Flange Nut
12	34330	4	3/8 x 3/4 Flange Bolt
13	34274	8	5/16 x 3/4 Carriage Bolt
14	34367	8	5/16 Flange Nut
15	34262	1	3/4 x 6 Bolt
16	34144	2	3/4 Washer
17	34265	1	3/4 Nylon Lock Nut

## Wheel and Hub Assembly

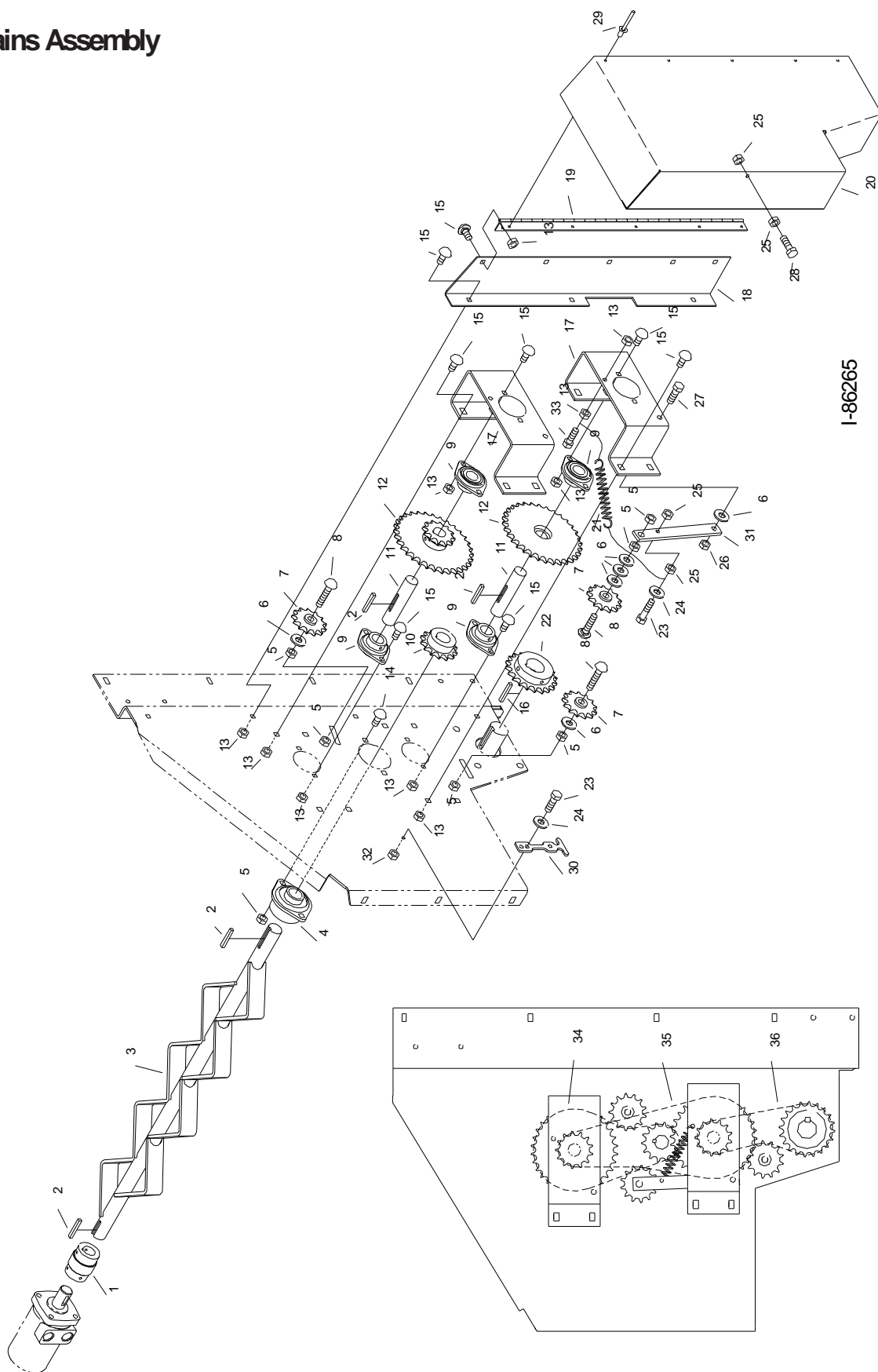


**Figure A2 - Wheel and Hub Assembly Parts Detail**

**Wheel and Hub Assembly (continued)**

<u>Item #</u>	<u>MC Part #</u>	<u>Qty.</u>	<u>Component Description</u>
1	215158	2	Grease Seal
2	215203	2	Outer Bearing Cone
3	215162	2	Hub (includes items 12, 13)
4	215164	2	Washer
5	215161	2	Dust Cap
6	215160	2	Spindle Nut
7	34347	2	Cotter Pin
8	215133	2	Wheel and New Tire
	215119	2	Wheel
	215126	2	New Tire
9	215222	12	Wheel Lug
10	215159	2	Inner Bearing Cone
11	215114	2	Complete Hub (includes items 1-7, 10)
12	215279	2	Inner Bearing Cup
13	215277	2	Outer Bearing Cup

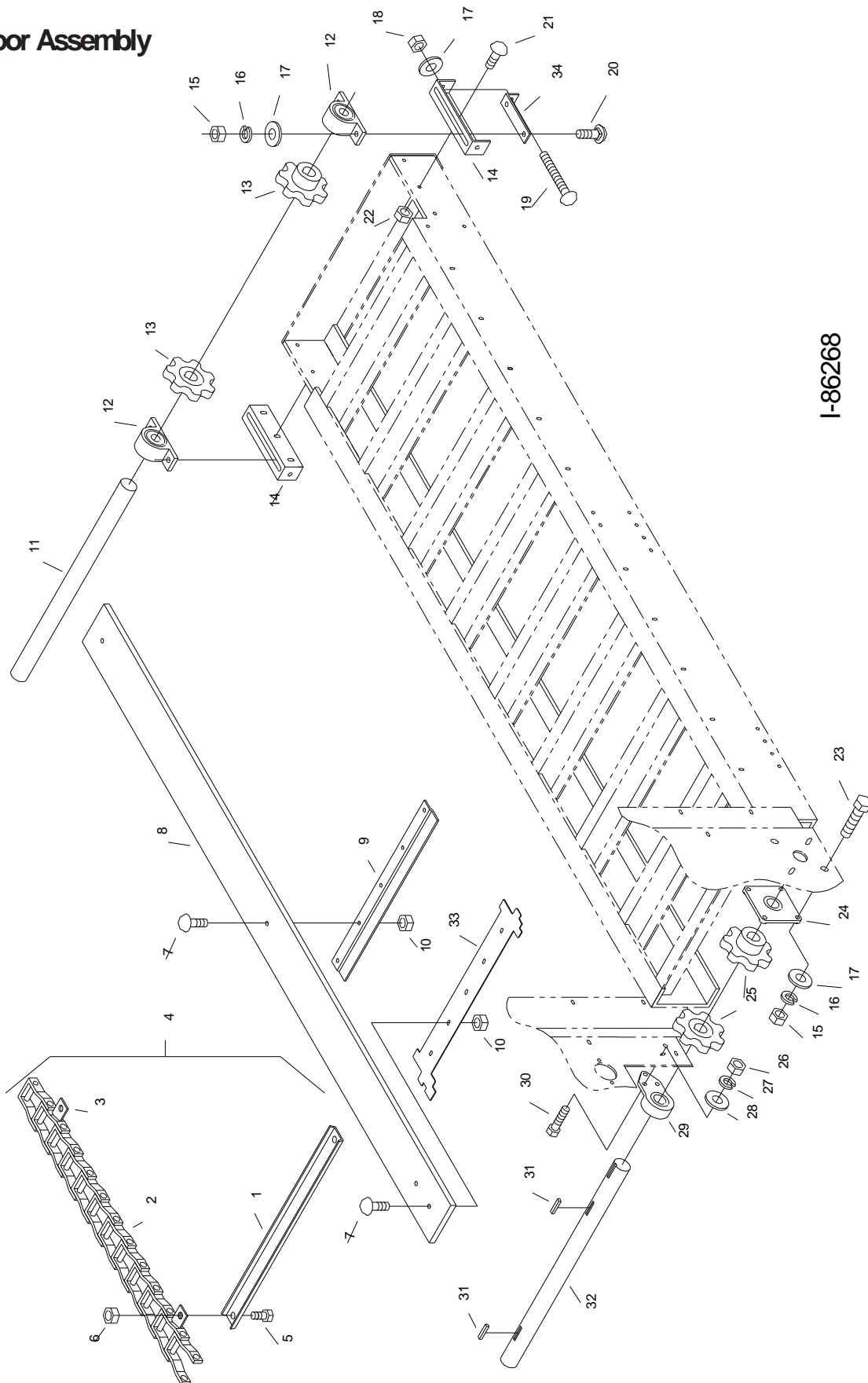
# Drive Chains Assembly





<u>Item #</u>	<u>Part #</u>	<u>Qty</u>	<u>Description</u>
1	271036	1	Shaft Coupler
2	210131	4	1/4 x 1-1/4 Key
3	271113	1	Beater
4	261407	1	1-1/8 Shielded Flange Bearing
5	34392	8	3/8 Flange Nut
6	34018	6	3/8 Washer
7	210205	3	Idler Sprocket
8	34413	3	3/8 x 2 Carriage Bolt
9	210144	4	1" 2 Flange Bearing
10	210428	1	14 Tooth Sprocket
11	271139	2	Jack Shaft
12	210407	2	Sprocket 12 Tooth + 32 Tooth
13	34367	26	5/16 Flange Nut
14	34191	2	3/8 x 3/4 Carriage Bolt
15	34274	24	5/16 x 3/4 Carriage Bolt
16	220179	1	3/8 x 2 Key
17	271146	2	Jack Shaft Bracket
18	271147	1	Rear Wall of Shield
19	270810	1	Hinge
20	271099	1	Shield
21	220138	1	Spring
22	210467	1	20 Tooth Sprocket
23	34214	2	1/4 x 1 Bolt
24	34052	2	1/4 Washer
25	34092	4	1/4 Flange Nut
26	34220	1	3/8 Nylon Lock Nut
27	34199	1	3/8 x 1 Bolt
28	34251	1	1/4 x 1-1/2 Bolt
29	34346	5	3/16 x 1/4 Pop Rivet
30	220113	1	Rubber Latch
31	261582	1	Idler Bracket
32	34124	1	1/4 Nylon Lock Nut
33	34222	1	5/16 x 1-1/4 Bolt
34	210470	1	Chain #50RC x 46 Links
35	210372	1	Chain #50RC x 58 Links
36	210471	1	Chain #50RC x 40 Links

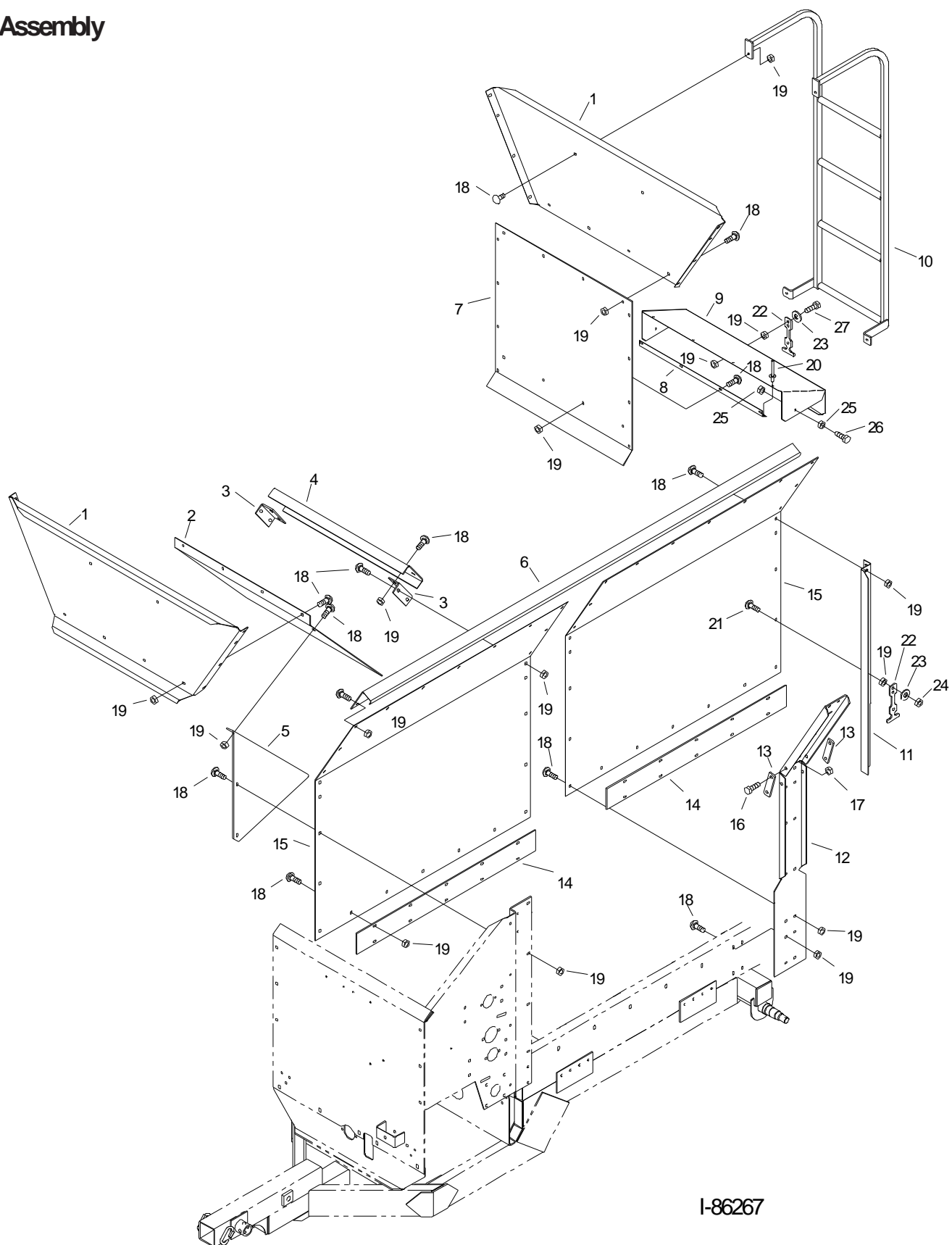
# Apron/Floor Assembly



I-86268

<u>Item #</u>	<u>Part #</u>	<u>Qty</u>	<u>Description</u>
1	271140	16	Apron Slat
2	210259	122	Chain Link
3	210256	32	Chain Link with Slat Tab
4	271141	1	Complete Apron Assembly
5	34234	32	1/4 x 3/4 Bolt
6	34124	32	1/4 Nylon Stop Nut
7	34282	20	5/16 x 1-1/2 Carriage Bolt
8	271170	5	Floor Board
9	271169	2	Floor Board Hold-down
10	34367	20	5/16 Flange Nut
11	271120	1	Rear Apron Shaft
12	210418	2	Rear Apron Bearing
13	270815	2	Rear Apron Sprocket
14	270289	2	Bearing Mount
15	34034	8	1/2 Nut
16	34035	8	1/2 Lock Washer
17	34094	10	1/2 Washer
18	34211	2	1/2 Nylon Lock Nut
19	34421	2	1/2 x 4 1/2 Carriage Bolt
20	34240	4	1/2 x 2 Carriage Bolt
21	34191	6	3/8 x 3/4 Carriage Bolt
22	34392	6	3/8 Flange Nut
23	34226	4	1/2 x 1-1/2 Bolt
24	210217	1	4 Bolt Cast Bearing
25	210155	2	Front Apron Sprocket
26	34087	3	3/8 Nut
27	34141	3	3/8 Lock Washer
28	34018	3	3/8 Washer
29	210218	1	3 Bolt Cast Bearing
30	34255	3	3/8 x 1-1/2 Bolt
31	220179	2	3/8 x 2 Key
32	271119	1	Apron Drive Shaft
33	271157	1	Corner Spill Guard

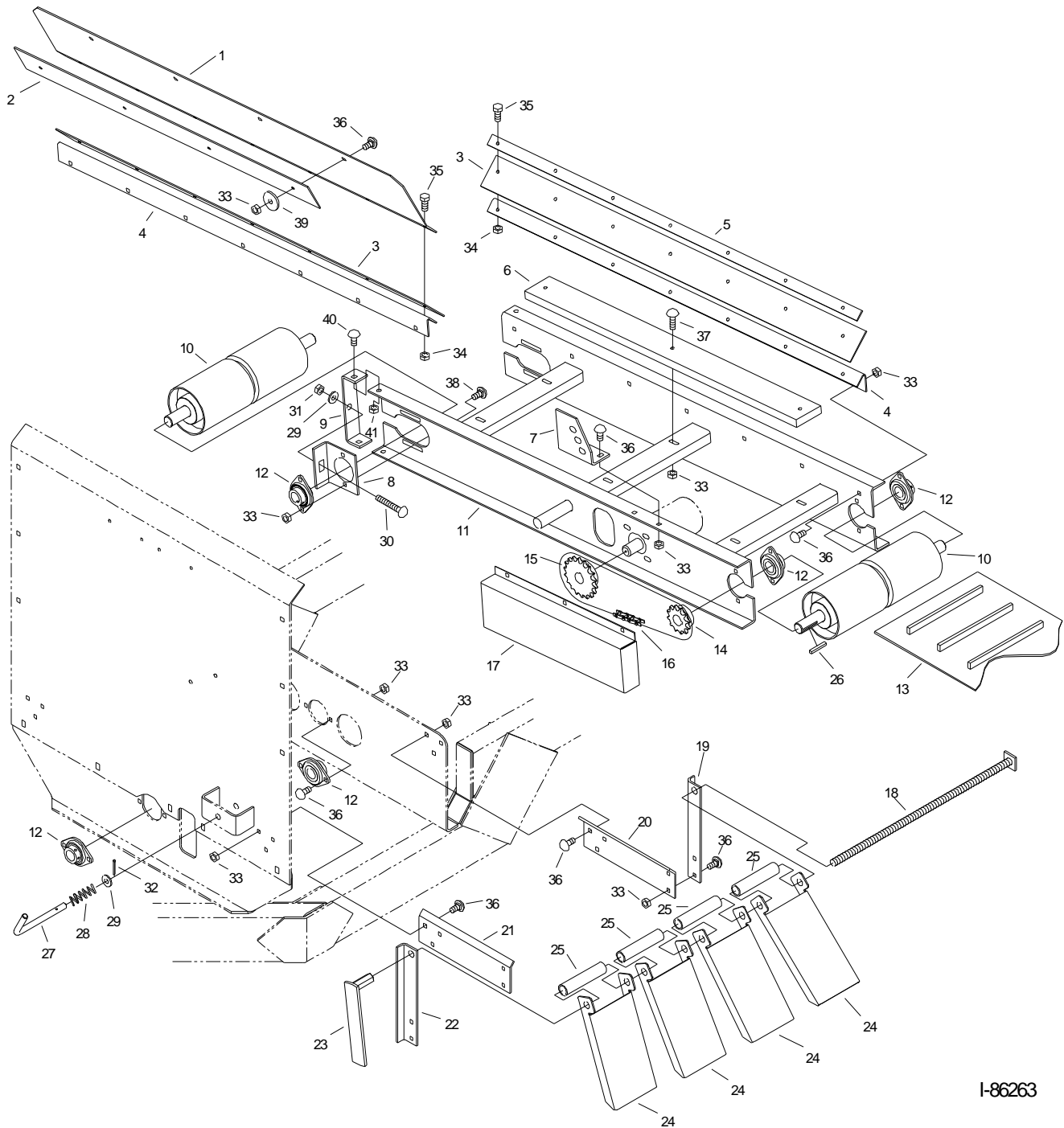
# Box Assembly



I-86267

<u>Item#</u>	<u>Part #</u>	<u>Qty</u>	<u>Description</u>
1	271101	2	Top Front and Rear
2	271151	1	Load Retainer
3	270231	2	Center Support Bracket
4	271103	1	Center Support
5	270559	1	Left Load Retainer Bracket
	270558	1	Right Load Retainer Bracket
6	271164	2	Top Edging
7	271102	1	Lower Rear
8	271122	1	Hinge
9	271121	1	Rear Shield
10	271148	1	Ladder
11	270115	1	Left Box Support
	270114	1	Right Box Support
12	270105	2	Side Support
13	270304	4	Brace
14	270305	4	Side Bracket
15	271165	4	Side
16	34330	8	3/8 x 3/4 Flange Bolt
17	34392	8	3/8 Flange Nut
18	34274	141	5/16 x 3/4 Carriage Bolt
19	34367	144	5/16 Flange Nut
20	34346	4	3/16 x 1/4 Pop Rivet
21	34282	1	5/16 x 1-1/2 Carriage Bolt
22	220113	2	Rubber Latch
23	34057	2	5/16 Washer
24	34223	1	5/16 Nylon Lock Nut
25	34092	4	1/4 Flange Nut
26	34251	2	1/4 x 1-1/2 Bolt
27	34257	1	5/16 x 1-1/2 Bolt

## Conveyor and Deflectors

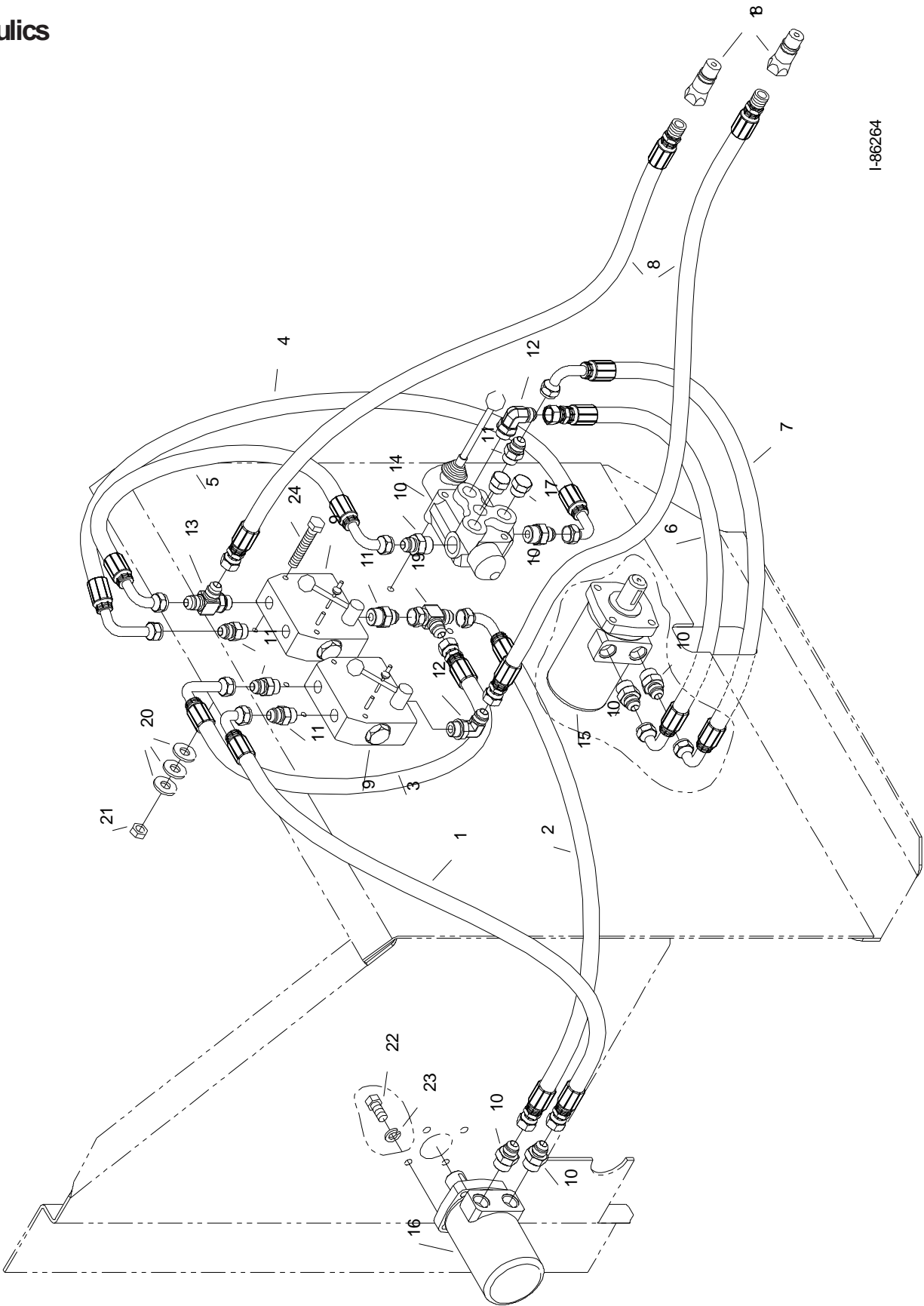


I-86263

<u>Item #</u>	<u>Part #</u>	<u>Qty</u>	<u>Description</u>
1	271156	1	Spill Guard
2	220209	1	Front Rubber Seal
3	220152	2	Conveyor Rubber Seal
4	271143	2	Conveyor Edging
5	270599	1	Rubber Hold Down
6	271145	2	Support Board
7	271136	1	Adjustment Bracket
8	271133	2	Belt Tightener Bracket
9	271132	2	End Bracket
10	215338	2	Conveyor Pulley
11	271130	1	Conveyor Frame
12	210144	6	1" 2-Flange Bearing
13	215367	1	Belt
14	210145	1	12 Tooth Sprocket
15	210468	1	18 Tooth Sprocket
16	210229	1	Chain (#50 RC x 54 Links)
17	271100	1	Shield
18	271131	2	Deflector Pivot
19	271129	2	Vertical Deflector Support (left rear, right front)
20	271115	2	Horizontal Deflector Support (left rear, right front)
21	271116	2	Horizontal Deflector Support (right rear, left front)
22	271128	2	Vertical Deflector Support (right rear, left front)
23	271135	2	Deflector Tightener Arm
24	271134	8	Deflector
25	271159	8	Spacer Tubing
26	210131	1	1/4 x 1-1/4 Key
27	261631	1	Latch Pin
28	220190	1	Spring
29	34227	3	1/2 Washer
30	34091	2	1/2 x 3 Carriage Bolt
31	34211	2	1/2 Nylon Lock Nut
32	34209	1	Cotter Pin
33	34099	52	5/16 Flange Nut
34	34124	14	1/4 Nylon Lock Nut
35	34234	14	1/4 x 3/4 Bolt
36	34274	42	5/16 x 3/4 Carriage Bolt
37	34282	6	5/16 x 1-1/2 Carriage Bolt
38	34275	4	5/16 x 1 Carriage Bolt
39	34373	4	3/8 Large Washer
40	34191	4	3/8 x 3/4 Carriage Bolt
41	34009	4	3/8 Flange Nut



# Hydraulics



I-86264

<u>Item #</u>	<u>Part #</u>	<u>Qty</u>	<u>Description</u>
1	243184	1	1/2" Hose 28" 8FJX-8FJX90S
2	243185	1	1/2" Hose 31" 8FJX-8FJX90S
3	243186	1	1/2" Hose 29" 8FJX-8FJX90L
4	243187	1	1/2" Hose 36" 8FJX90S-8FJX90L
5	243188	1	1/2" Hose 25" 8FJX90S-8FJX90S
6	243189	1	1/2" Hose 22" 8FJX-8FJX90S
7	243190	1	1/2" Hose 24" 8FJX90S-8FJX90S
8	243191	2	1/2" Hose 70" 8FJX-8MP
9	240256	2	Flow Control
10	240146	6	Adapter 10MB-8MJ
11	240151	5	Adapter 8MB-8MJ
12	240150	2	Adapter 8MB-8MJ90
13	240149	1	Tee 8MB-8MJ-8MJ
14	240275	1	4 Way Valve
15	240135	1	Hydraulic Motor
16	240134	1	Hydraulic Motor
17	240276	2	8MB Plug
18	240233	2	Quick Coupler to Tractor
19	240164	1	Tee 8FJX-8MJ-8MJ
20	34052	12	1/4 Washer
21	34124	4	1/4 Nylon Lock Nut
22	34197	8	3/8 x 3/4 Bolt
23	34141	8	3/8 Lock Washer
24	34301	4	1/4 x 2-1/2 Bolt
25	34270	2	5/16 x 2-1/2 Bolt
26	34223	2	5/16 Nylon Lock Nut

